



Mid-Hawk News



May 2026



What's Inside

- 2 Activity Calendar
- 3 Breakfast Menu
- 4 Lunch Menu
- 5-7 Brain Health Awareness Week
- Dress Up Days
- Tatt the Staff Fundraiser
- Kona Ice
- 8 MS Library EOY Return Dates
- 9 WD Gear Drive
- 10 Note from the Nurse
- 11 8th Grade Promotion
- 12 2026-2027 District Calendar
- 13 2026-2027 MS School Supplies
- 14 EPI School Supply Order

We are excited to announce an addition to our website that posts community activities for students to get involved in outside of school hours. If you would like to view the opportunities OR submit something to be posted please visit the following [link](#).



**Check out our
West Delaware Middle school
Facebook Page for more updates
and reminders!**

May 2026

SUN	MON	TUE	WED	THU	FRI	SAT
					1 8th Grade Galena Trip 7/8 Spring Dance 7-9pm	2
3	4 7/8 Girls Track @ Cedar Falls 5/6 Band & Vocal Concert	5 7/8 Boys Track @ Vinton-Shellsburg 7/8 Girls Track @ CPU	6 1:25 Dismissal	7 WDMS All-Stars Ceremony Together We Are Day	8 WAMAC 7/8 Boys & Girls Track @ Home	9
10	11 7/8 Band & Vocal Concert	12 8th Grade HS Tours 7/8 Girls Track @ Vinton-Shellsburg	13 1:25 Dismissal	14	15 5th & 6th Grade Mid-Hawk Relays	16
17	18 5th Grade Camp Wapsie Field Trip	19	20 1:25 Dismissal St. Mary's Open House	21 R WAY DAY	22 8th Grade Lost Island Trip	23
24	25 No School - Memorial Day	26	27 1:25 Dismissal	28 Last Day of School 8th Grade Promotion 11:30 1:25 Dismissal	29	30
31						

May



Lambert & MS Breakfast Menu

monday

tuesday

wednesday

MENU SUBJECT TO CHANGE

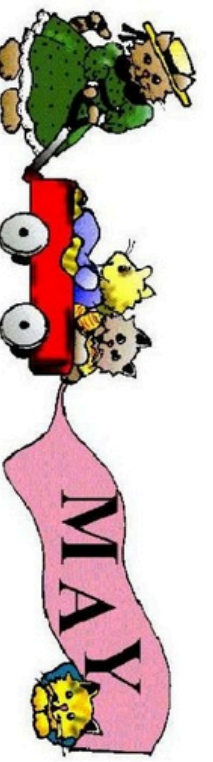
4	CHOC FILLED DONUT, W/G FRUIT 100% FRUIT JUICE MILK VARIETY	5	BREAKFAST RINGS, W/G FRUIT 100% FRUIT JUICE MILK VARIETY	6	APPLE/CHERRY FRUDEL, W/G FRUIT 100% FRUIT JUICE MILK VARIETY	7	PANCAKE ON A STICK, W/G W/SYRUP FRUIT 100% FRUIT JUICE MILK VARIETY	8	CINNAMON ROLL, W/G FRUIT 100% FRUIT JUICE MILK VARIETY	1	CHEEZY OMELET W/ SAUSAGE FRUIT 100% FRUIT JUICE MILK VARIETY		
	*STUFFED HASHBROWN		*BISCUITS & GRAVY, W/G		*PANCAKE SAUSAGE GRIDDLE, W/G		*CHURRO, W/G		*EGG/SAUSAGE/CHEESE MUFFIN, W/G		*FRENCH TOAST STICKS, W/G		
11	LONG JOHN, W/G FRUIT 100% FRUIT JUICE MILK VARIETY	12	WAFFLE STICKS W/SYRUP FRUIT 100% FRUIT JUICE MILK VARIETY	13	EGG PATTY W/CHEESE ENGLISH MUFFIN, W/G FRUIT 100% FRUIT JUICE MILK VARIETY	14	PANCAKES, W/G W/SYRUP FRUIT 100% FRUIT JUICE MILK VARIETY	15	CEREAL BOWL W/MUFFIN, W/G FRUIT 100% FRUIT JUICE MILK VARIETY		*STUFFED HASHBROWN		
	*ASSORTED FRUDELS, W/G		*APPLE FILLED DONUT, W/G		*CHOCOLATE FILLED BITES, W/G		*CHURRO, W/G		*STUFFED HASHBROWN				
18	FRENCH TOAST STICKS, W/G W/SYRUP FRUIT 100% FRUIT JUICE MILK VARIETY	19	CEREAL BOWL W/MUFFIN, W/G FRUIT 100% FRUIT JUICE MILK VARIETY	20	APPLE FILLED DONUT RING, W/G FRUIT 100% FRUIT JUICE MILK VARIETY	21	RAINBOW YOGURT GRANOLA, W/G FRUIT 100% FRUIT JUICE MILK VARIETY	22	CHEEZY OMELET W/SAUSAGE PATTY FRUIT 100% FRUIT JUICE MILK VARIETY				
	*EGG/SAUSAGE/CHEESE MUFFIN, W/G		*PANCAKE ON A STICK, W/G		*PANCAKE SAUSAGE GRIDDLE, W/G		*CHURRO, W/G		*DUTCH WAFFLE, W/G				
25	NO SCHOOL TODAY	26	CEREAL BOWL W/MUFFIN FRUIT 100% FRUIT JUICE MILK VARIETY	27	CINNAMON ROLL, W/G FRUIT 100% FRUIT JUICE MILK VARIETY	28	ASSORTED BREAKFAST DAY, W/G FRUIT 100% FRUIT JUICE MILK VARIETY						
			*CHOCOLATE FILLED BITES, W/G		*BISCUITS & GRAVY, W/G								

Alternate Breakfast Menu
BREAKFAST PIZZA, W/G
FRUIT
100% FRUIT JUICE
MILK VARIETY

MILK VARIETY
Chocolate, Fat Free
White Fat Free
White, LoFat, 1%

This institution is an
equal opportunity
provider.

Middle School Lunch Menu



Monday	Tuesday	Wednesday	Thursday	Friday
<p>4 CHICKEN ALFREDO, W/G SEASONED NOODLES BUTTERY PEAS CORN WATERMELON OR PEACH CUP MILK VARIETY</p>	<p>5 CORN DOG, W/G SWEET POTATO FRIES GLAZED CARROTS BANANA, FRESH OR APPLESAUCE CUP O'HENRY BAR, W/G MILK VARIETY</p>	<p>6 ORANGE CHICKEN BROWN RICE, W/G STEAMED BROCCOLI CARROT STICKS W/RANCH MELON, FRESH OR BLUEBERRIES MILK VARIETY</p>	<p>7 TURKEY DINNER ROLL, W/G WHIPPED POTATOES & GRAVY SQUASH FRUIT SLUSHIE OR ORANGE, FRESH MILK VARIETY</p>	<p>8 SHRIMP OPERS, W/G MAC & CHEESE, W/G ROMAINE SALAD CALIFORNIA BLEND MIXED VEGGIES APPLE SLICES OR STRAWBERRIES MILK VARIETY</p>
<p>MILK VARIETY Chocolate, Fat Free White, Fat Free White, LoFat, 1%</p>				
<p>MENU SUBJECT TO CHANGE</p>				
<p>11 SPAGHETTI, W/G GARLIC CHEESE BREAD, W/G BUTTERED PEAS CARROT STICKS W/LIGHT RANCH ORANGE, FRESH OR MIXED FRUIT, LIGHT SYRUP MILK VARIETY</p>	<p>12 GRILLED CHICKEN PATTY SEASONED NOODLES GREEN BEANS ROMAINE SALAD W/LIGHT RANCH GRAPES, FRESH OR STRAWBERRIES RICE KRISPIE TREAT MILK VARIETY</p>	<p>13 BREADED CHICKEN PATTY, W/G HAMBURGER BUN, W/G BAKED FRENCH FRIES BROCCOLI, FRESH W/LIGHT RANCH BLUEBERRIES OR SLICED PEARS CHOCOLATE CHIP COOKIE DOUGH, W/G MILK VARIETY</p>	<p>14 FRENCH TOAST STICKS, W/G SAUSAGE PATTY BAKED HASHBROWN APPLE SLICES OR FRUIT SLUSHIE MILK VARIETY</p>	<p>15 CHICKEN FAJITA WRAP, W/G GLAZED CARROTS BLACK BEAN SALAD KIWI, FRESH OR PEACH CUP MILK VARIETY</p>
<p>18 HAMBURGER HAMBURGER BUN, W/G BAKED FRIES CORN PINEAPPLE CHUNKS OR BAKED APPLES MILK VARIETY</p>	<p>19 MS PICNIC: PORK PATTY (PORK PRODUCERS GRILL) HAMBURGER BUN, W/G BAKED WEDGES GREEN BEANS WATERMELON OR PEACH CUP PEANUT BUTTER CHOCOLATE CHIP COOKIE, W/G MILK VARIETY</p>	<p>20 HAM PATTY W/BUN, W/G BAKED WEDGES BAKED BEANS BANANA, FRESH OR MIXED FRUIT, LIGHT SYRUP SUGAR COOKIE, W/G MILK VARIETY</p>	<p>21 CHICKEN NUGGETS, W/G ROLL, W/G WHIPPED POTATOES & GRAVY CHEEZY BROCCOLI STRAWBERRIES OR MELON, FRESH MILK VARIETY</p>	<p>22 SCHOOL CHEESE PIZZA, W/G ROMAINE SALAD W/LIGHT RANCH GRAPE TOMATOES APPLE SLICED OR BLUEBERRIES MILK VARIETY</p>
<p>25 NO SCHOOL TODAY</p>	<p>26 HOT CHICKEN SUNDAY, W/G WHIPPED POTATOES BUTTERY PEAS CANTALOUPE OR STRAWBERRIES MILK VARIETY</p>	<p>27 BEEF TACO WRAP, W/G BAKED TOTS REFRIED BEANS BANANA OR MIXED BERRY CUP MILK VARIETY</p>	<p>28 ASSORTED PATTY DAY BAKED FRIES CORN PEACH CUP OR PINEAPPLE CHUNKS MILK VARIETY</p>	
<p>ALTERNATE MAIN ITEM Garden Salad w/Roll OR Crustless PBJ & Cheese Stick offered everyday Mon., Wed., Fri., Hamburger Patty with WG Bun</p>				
<p>This institution is an equal opportunity provider.</p>				

BRAIN HEALTH AWARENESS WEEK

DAYS

Dress up to show your support for each other!

Monday, May

4

Mello Monday

*Getting 8 hours of sleep helps reduce stress & improve mood!
Wear your PJs today!*

Tuesday, May

5

Tie-Dye Tuesday

Wear tie-dye or colorful clothes today to represent the emotions we feel!

Wednesday, May

6

Workout Wednesday

*Staying active helps us feel good.
Wear exercise clothes*

Thursday, May

7

Together We Are

*Wear your Together We Are Swag.
We will be doing whole school photo this day!*

Friday, May

8

Green Friday

Green is the national color of mental health acceptance, representing hope, strength, and support. Wear Green to support each other!

TATT THE STAFF



TOGETHER WE ARE FUNDRAISER

\$1

TATTOO

1. PURCHASE YOUR TATTOOS, ANY
MORNING MAY 4TH-7TH

2. CHOOSE FROM PARTICIPATING STAFF

3. STAFF WILL ROCK THEIR TATTOOS ON MAY 8TH

JUST LIKE YOUR
NEGATIVE THOUGHTS,
THESE TATTOOS WON'T
LAST FOREVER!

Supporting Each Other
Making a Change
Better **ONE**
Together We Are
ending the **#WD STRONG**
building connections **stigma** Hawk Family

WDMS FINAL TOGETHER WE ARE

MAY'S BRAIN HEALTH FOCUS:

PHYSICAL WELLNESS

Regular exercise can have a profoundly positive impact on depression, anxiety, and ADHD. It also relieves stress, improves memory, helps you sleep better, and boosts your overall mood. The smallest amount of movement can make real differences! Thursday afternoon students will be learning how simple and fun exercise can be!

**Kona Ice will be available for
student purchase!**

Kiddie \$4 | Classic \$5 | King \$6

Prepay for your student in
advance until
May 6th at 6:00 pm by scanning
the QR Code,
or bring cash the day of!

Kona Code: K215X2508249



MIDDLE SCHOOL LIBRARY

END OF YEAR

INFORMATION



LAST DAY
TO CHECK OUT BOOKS:

**MONDAY,
MAY 18TH**



ALL BOOKS
AND MATERIALS
DUE BACK:

**FRIDAY,
MAY 22ND**



If a student **does not** return an item,
their account will be **BILLED**
for the replacement cost of that item.





DO YOU OR YOUR KIDS HAVE
WEST DELAWARE
GEAR YOU'VE OUTGROWN?



DONATE USED HAWKS CLOTHING THAT
NO LONGER FITS OR IS NEEDED!



ALL DONATED CLOTHING WILL BE OFFERED TO
FAMILIES FREE OF CHARGE AT BACK TO SCHOOL NIGHT

DONATIONS ACCEPTED UNTIL MAY 28TH



PLEASE DROP OFF IN THE MIDDLE SCHOOL OFFICE!

QUESTIONS? EMAIL HANNAHCLEMEN@W-DELAWARE.K12.IA.US

West Delaware Middle School
Health Office
1101 Doctor Street
Manchester, IA 52057

Dear Parent or Guardian,

The Iowa Department of Public Health, Bureau of Immunization requires the meningitis vaccine for students enrolling in 7th and 12th grades. The administrative rule change was implemented in the 2017-2018 school year.

The Iowa Department of Public Health requires a one-time dose of meningitis vaccine received on or after 10 years of age for applicants in grades 7 and above, if born after September 15, 2004; and 2 doses of meningitis vaccine for applicants in grade 12, or 1 dose if received when applicants are 16 years of age or older.

Meningococcal disease is very serious. Approximately 2 of every 10 people who get meningococcal disease will die from the infection, even with quick and appropriate treatment. People who recover from meningococcal disease can have lifelong complications, such as loss of limb(s), deafness, nervous system problems, or brain damage. The meningitis vaccine is 85 – 100% effective at preventing infection from the subtypes of meningococcus found in the vaccine.

In addition to the meningitis vaccine, a one-time booster of tetanus, diphtheria, and pertussis (Tdap) vaccine is required for students enrolling in seventh grade or if born on or after September 15, 2000.

Your child will need to have **proof of Tdap and Meningococcal vaccine** administration before the 2026-2027 school year, or documentation of a valid Certificate of Immunization Exemption (Religious or Medical) or may be submitted in lieu of a Certificate of Immunization. **Per state law, any student who has not provided proof of these immunizations or exemptions by the first day of school cannot attend school and will be sent home.** Please call your medical provider to schedule an appointment as soon as possible. Delaware County Public Health holds their immunization clinics the first Tuesday of every month. To schedule your appointment with Public Health call 563-927-7551. Immunization records may be faxed to 563-927-9115 Attn: School Nurse.

Sincerely,

Chelsey Pangburn, RN BSN
West Delaware District School Nurse

****Please note--some doctor's offices schedule out months in advance and may not be able to schedule an appointment for you if you wait until August.****



Congratulations

CLASS OF

2030!

8TH GRADE PROMOTION!



THURSDAY, MAY 28TH



11:30AM



MIDDLE SCHOOL GYM



2026-2027 Calendar

Start	Finish
August 24	May 26
High School Start 8:00AM	
Middle School Start 8:05AM	
Elementary Start 8:05 AM	

CALENDAR LEGEND

Start/End	
Work Day*	
Qtr/Trimester	
Prof. Dev.*	
P/T Conf.	
Holidays	
Vacation Days	

*Professional Development and/or work days may become student days

HOLIDAYS:

Labor Day	(9/7)
ThanksgivingDay	(11/26)
ChristmasDay	(12/25)
New Year'sDay	(1/1)
Good Friday	(3/26)
MemorialDay	(5/31)

Parent/Teacher Conferences:
 High School 3:30-6:30
 Sept 30, Dec 9, Feb 24,
 Apr 21
 Lambert/Middle School
 2:30-6:30 Sept 30 & Oct 1 and
 Feb 24 & 25

Teacher last day TBD may need to add PD/work days to total 195 contract days.

Board Approved 2/9/2026

August 2026						Hours
M	T	W	Th	F		
10	11	12	13	14		0
17	18	19	20	21		0
24	25	26	27	28		30.83
31						
September 2026						Hours
	1	2	3	4		30.83
7	8	9	10	11		24.33
14	15	16	17	18		30.83
21	22	23	24	25		30.83
28	29	30				
October 2026						Hours
			1	2		30.66
5	6	7	8	9		30.83
12	13	14	15	16		30.83
19	20	21	22	23		30.83
26	27	28	29	30		24.33
November 2026						Hours
2	3	4	5	6		30.83
9	10	11	12	13		30.83
16	17	18	19	20		30.83
23	24	25	26	27		13
30						
December 2026						Hours
	1	2	3	4		30.83
7	8	9	10	11		30.83
14	15	16	17	18		30.83
21	22	23	24	25		11.33
28	29	30	31			
January 2027						Hours
				1		0
4	5	6	7	8		24.33
11	12	13	14	15		30.83
18	19	20	21	22		24.33
25	26	27	28	29		30.83
February 2027						Hours
1	2	3	4	5		30.83
8	9	10	11	12		30.83
15	16	17	18	19		30.83
22	23	24	25	26		30.66
March 2027						Hours
1	2	3	4	5		30.83
8	9	10	11	12		30.83
15	16	17	18	19		30.83
22	23	24	25	26		24.33
29	30	31				
April 2027						Hours
			1	2		17.83
5	6	7	8	9		30.83
12	13	14	15	16		30.83
19	20	21	22	23		30.83
26	27	28	29	30		30.83
May 2027						Hours
3	4	5	6	7		30.83
10	11	12	13	14		30.83
17	18	19	20	21		30.83
24	25	26	27	28		17.83
31						
June 2027						Hours
	1	2	3	4		

1080 Hours Calendar

Aug 13&14 New Teacher Work Days
 Aug 18-20 Teacher Work Days
 Aug 21 Teacher Flex Day
Aug 24 First Day of School
 Aug 26 **Early Out**-Teacher Collab.

Sept 2,9,16,23,30 **Early Out**-Teacher Collab.
 Sept. 7 **No School** - Labor Day
 Sept 30 **Early Out**-P/T Conferences JK-12

Oct 1 **Early Out** – P/T Conferences JK-8
 HS Staff ProfDev
 Oct 2 **No School** Teacher Flex Day
 Oct 7,14,21,28 **Early Out**-Teacher Collaboration
 Oct 23 **End of 1st Qtr (43 days/270.8 hrs)**
 Oct 26 **No School**- Teacher Collaboration

Nov 4,11,18 **Early Out**-Teacher Collaboration
 Nov 17 **End of Trimester 1**
 Nov.25-27 **No School** -ThanksgivingHoliday

Dec 2,9,16 **Early Out**-Teacher Collaboration
 Dec 9 HSP/T Conferences 3:30-6:30
 Dec 22 **Early Out**- Winter Break
 Dec 23-31 **No School** -Winter Break

Jan 1 **No School** –Winter Break
 Jan 4 **No School**- Teacher Collaboration
 Jan 5 Classes Resume
 Jan 6,13,20,27 **Early Out**-Teacher Collaboration
Jan 15 End Qtr/Sem (47 days/288.8 hrs)
 Jan 18 **No School** Teacher Work Day
 Jan 19 Begin 2nd Semester

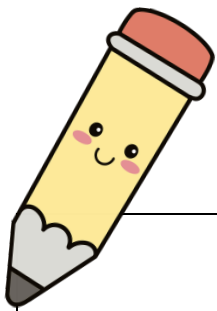
Feb 3,10,17,24- **Early Out**-Teacher Collaboration
 Feb 19 **End of Trimester 2**
 Feb 24 **Early Out**-P/T Conferences JK-12
 Feb 25 **Early Out** – P/T Conferences JK-8
 HS Staff Prof Dev
 Feb 26 **No School**- Teacher Flex Day

Mar 3,10,17,24,31 -**Early Out**-Teacher Collaboration
Mar 23 End of 3rd Qtr (45 days/283.80hrs)
 Mar 26 **No School** – Holiday
 Mar 29&30 **No School** – Vacation Day

Apr 7,14,21,28-**Early Out**-Teacher Collaboration
 Apr 21 HS P/T Conferences 3:30-6:30

May 5,12,19,26-**Early Out**-Teacher Collaboration
 May 21 Seniors Last Day (tentative)
 May 23 Graduation
May 27 Last Day of School – Early Out
End Qtr/Sem (44 days/267.63 hrs)
 May 28 Teacher Work Day
 May 31 Memorial Day

1,110 TotalHours
30 extra hours over 1,080



2025-2026 West Delaware Middle School Supply Lists

RECOMMENDATIONS FOR ALL GRADES:

Kleenex, hand sanitizer and a container of clorox disinfecting wipes

These can be provided specifically for your child, or as a donation for the whole class

Fifth Grade

- 4 - Plastic Folders with Pockets and Prongs (1 Black, 1 Yellow, 1 Red, 1 Blue)
- 1 - 70ct. Spiral Notebook wide-rule (Blue)
- 1 - Composition book
- 48 - No. 2 Presharpened pencils
- 1 - Presharpened colored pencils 12ct.
- 1 - Zipper Pencil Pouch - Nylon
- 1 - Small pack of pencil-top erasers
- 1 - Box kleenex*
- 2 - WIRED Earbud head phones
- 4 - package of (4) Dry Erase markers - will need replenished throughout the year
- 2 - Highlighters

*Donations of additional boxes of tissues and hand sanitizer would be much appreciated, but not required.

Sixth Grade

- 3 - Plastic Folders with Pockets and Prongs (1 Black, 1 Yellow, 1 Red)
- 24 - No. 2 Presharpened pencils
- 1 - Presharpened colored pencils 24 ct.
- 1 - 3X5 100ct. Ruled Index Cards
- 1 - Zipper Pencil Pouch - Nylon
- 1 - Fluorescent Highlighter (Yellow)
- 1 - Erasers (latex free, wedge, large)
- 1 - Box kleenex*
- 1 - Black Sharpie Fine Tip Marker
- 1 - TI-34 or TI-30 Calculator preferred OR any Texas Instrument Scientific Calculator
- 1 - WIRED Earbud head phones
- 1 - Loose Leaf Notebook Paper - Wide Rule, 150 ct.
- 4 - Dry Erase Markers
- 1 - 3-subject wide-rules spiral notebook
- 1 - Large glue stick
- 2 - 3 Ring white view vinyl binder- 1"

*Donations of additional boxes of tissues and hand sanitizer would be much appreciated, but not required.

Seventh Grade

- 6 - Plastic Folders with Pockets and Prongs (1 Red, 1 Black, 1 Blue, 1 Green, 1 Yellow, 1 Purple)
- 2 - Composition Notebook (1 Green, 1 Blue)
- 1 - 70ct. Spiral Notebook wide-rule (1 Red)
- 48 - No. 2 Presharpened pencils
- 2 - Fluorescent Highlighter (any color)
- 1 - Zipper Pencil Pouch - Nylon
- 2 - Medium stick pens (Red)
- 1 - Eraser (latex free, wedge, large)
- 1 - Box kleenex*
- 1 - black Sharpie
- 2 - WIRED Earbud head phones
- 1 - TI-34 or TI-30 Calculator preferred OR any Texas Instrument
- 1 - Presharpened colored pencils 12ct.
- 4 - dry erase markers (any color) - will need replenished
- 3 - Glue stick - .77 oz. will need to be replenished throughout the

*Donations of additional boxes of tissues and hand sanitizer would be much appreciated, but not required.

Eighth Grade

- 4 - Plastic Folders with Pockets and Prongs (1 Black, 1 Yellow, 1 Red, 1 Blue)
- 24 - No. 2 Presharpened pencils - may need to be replenished
- 1 - Variety pack of pens (any color)
- 1 - Zipper Pencil Pouch - Nylon
- 2 - 3 Ring white view vinyl binder - 1"
- 2 - Highlighters (any color)
- 1 - Box kleenex*
- 1 - WIRED Earbud head phones
- 2 - 70ct. Spiral Notebook wide-rule (any color)
- 1 - Presharpened color pencils - 24 ct.
- 1 - Black Sharpie Fine Tip Marker
- 1 - TI-34 or TI-30 Calculator preferred OR any Texas Instrument
- 2 - Expo Dry Erase Markers
- 1 - 10ct. markers

*Donations of additional boxes of tissues and hand sanitizer would be much appreciated, but not required.

P.E. Supply List for Grades 5-8

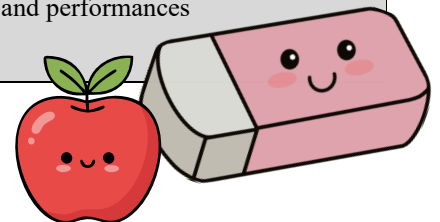
- Basic short-sleeved t-shirt any color (may include some lettering or design)
- Athletic shorts any color
- Socks any color
- Athletic shoes with laces
- Sweatshirts/pants are allowed during outside activity.
- Hiking boots, flip flops, sandals, or slip-ons are not allowed.
- Coats and sweats may not be used for inside activity.

Band Supply List for Grades 5-8

- Dress clothes for all concerts - no jeans or flip flops.
- See band handbook for instrument specific supplies
- 1/2 inch Black 3-ring binder, durable, clear cover

Chorus Supply List for Grades 5-8

- Dress clothes for all concerts and performances
- No jeans or flip flops





Save Time & Money on School Supply Shopping

Exact pack items & brands customized to your school lists.

WEST DELAWARE CCS

2026-2027 School Supply Sale

Save Over 40% on Supplies Compared to Other Online Retailers

Grade Level 2026-2027	Cost
Jr. Kindergarten	\$54.00
Kindergarten	\$69.00
1st	\$42.80
2nd	\$48.00
3rd	\$51.40
4th	\$60.30
5th	\$66.00
6th	\$50.40
7th	\$58.20
8th	\$49.60
TI-34 Multiview Calculators	\$21.60

**Order Securely Online
Until Sunday, May 31st**www.educationalproducts.com/shoppacks

Enter the school ID

WES284

(3 letters /3numbers)

Sales tax will be applied at checkout

For questions, please contact
JodyKing jodyaking26@gmail.com

563-920-3562

*All 6th-8th graders are required to provide a TI-34 Multiview Calculator. You may purchase this through EPI.

Packs can be picked up on Wednesday,
August 5, 5-7p.m. in the High School
Commons**Scan QR code
and
Order Today!**

*Teacher Approved *Delivered before the First Day of School *Save Time and Money